

The logo features the letters 'SA' in a bold, orange, sans-serif font. To its right is a circular icon with an orange border containing a white silhouette of a city skyline with a tower and a circular arrow. Further right, the word 'TOMORROW' is written in a large, bold, grey, sans-serif font. Below 'TOMORROW', the words 'sub area planning' are written in a smaller, orange, sans-serif font.

SA  **TOMORROW**
sub area planning

NE Loop 410 and I-35 Regional Center
All Residents Community Meeting

City of San Antonio
Planning Department
SA Tomorrow Planning Initiatives

February 21, 2019



Auxiliary Marketing Services
Bowtie
Cambridge Systematics, Inc.
Economic & Planning Systems, Inc.
Mosaic Planning and Development Services
Ximenes & Associates

Introductions



Heather Yost, Senior Planner – Project Manager

Heather.Yost@sanantonio.gov

Bridgett White, Director

Rudy Niño, Assistant Director

NE Loop 410 and I-35 Regional Center Plan Project Page:

<https://ne410-35.sacompplan.com/>

Open House Overview

Background Presentation

- SA Tomorrow and the Comprehensive Plan Background
- What is a Sub-Area Plan?
- The Planning Process and Topics Covered
- How can you be involved?
- Resources

Open House Stations

- Sign In and Sign Up
- Visioning Questionnaire (iPads)
- Wall Graphic – Opportunities & Challenges
- Information Boards
- Information Table

SA



TOMORROW

SA Tomorrow Background



The Challenge: Expected Growth



+ 1.1 million

1.7 million
2010

2.8 million
2040

POPULATION



Bexar County

An additional 1.1 million people are forecasted to live in Bexar County between 2010 and 2040.
This means **½ million new housing units and ½ million new jobs.**

The Approach: Comprehensive Planning

The SA Tomorrow Comprehensive Plan was adopted by City Council in 2016 to help guide growth in ways that align with citywide quality of life, environmental, transportation, and fiscal goals.

The plan document:

- Looked long-term (to 2040)
- Identified Key Issues
- Established Citywide Goals
- Developed Policy Theme Areas
- And was created with robust community engagement



SA



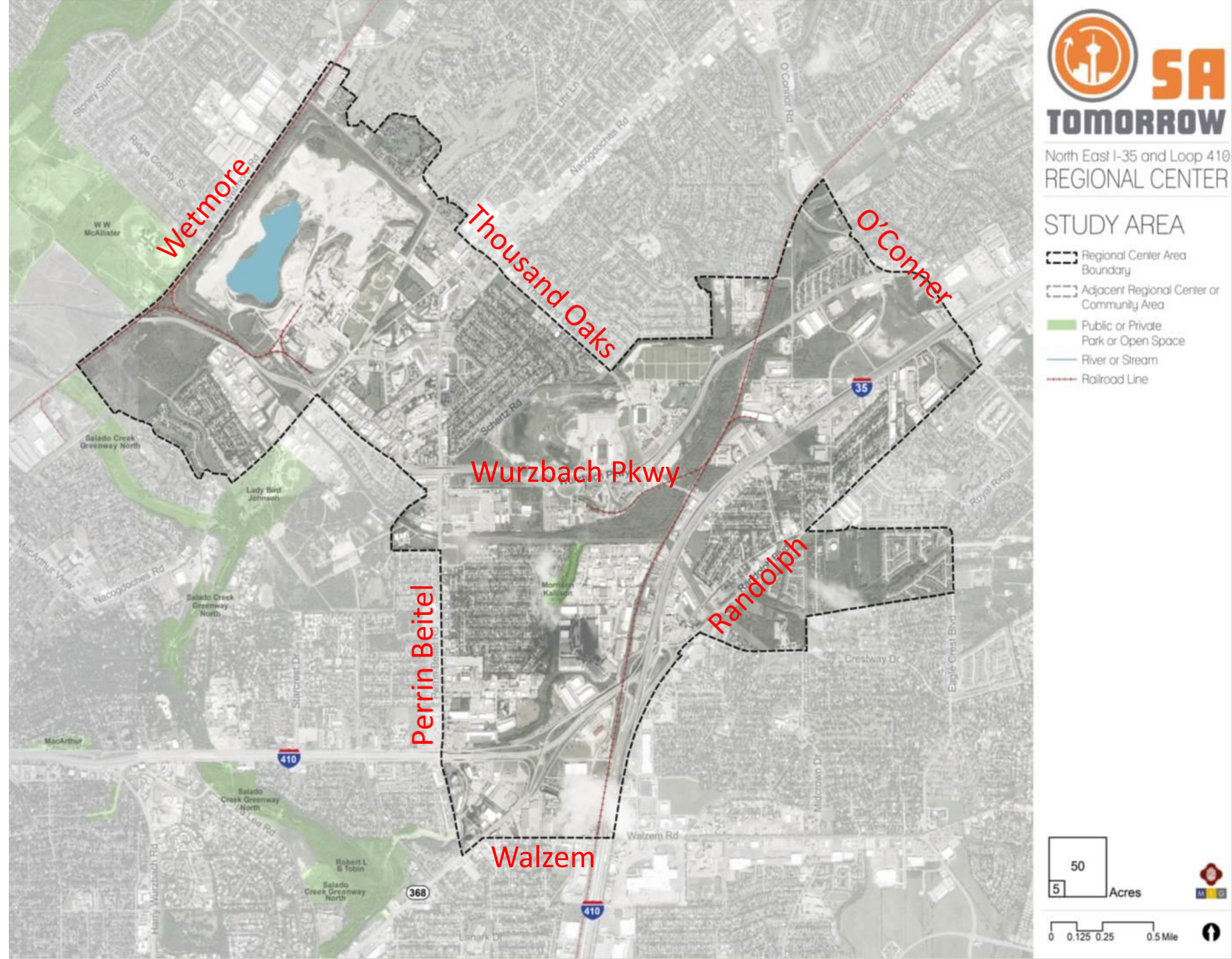
TOMORROW

The Comprehensive Plan, Regional Centers, and Community Areas: How Do They Fit Together?



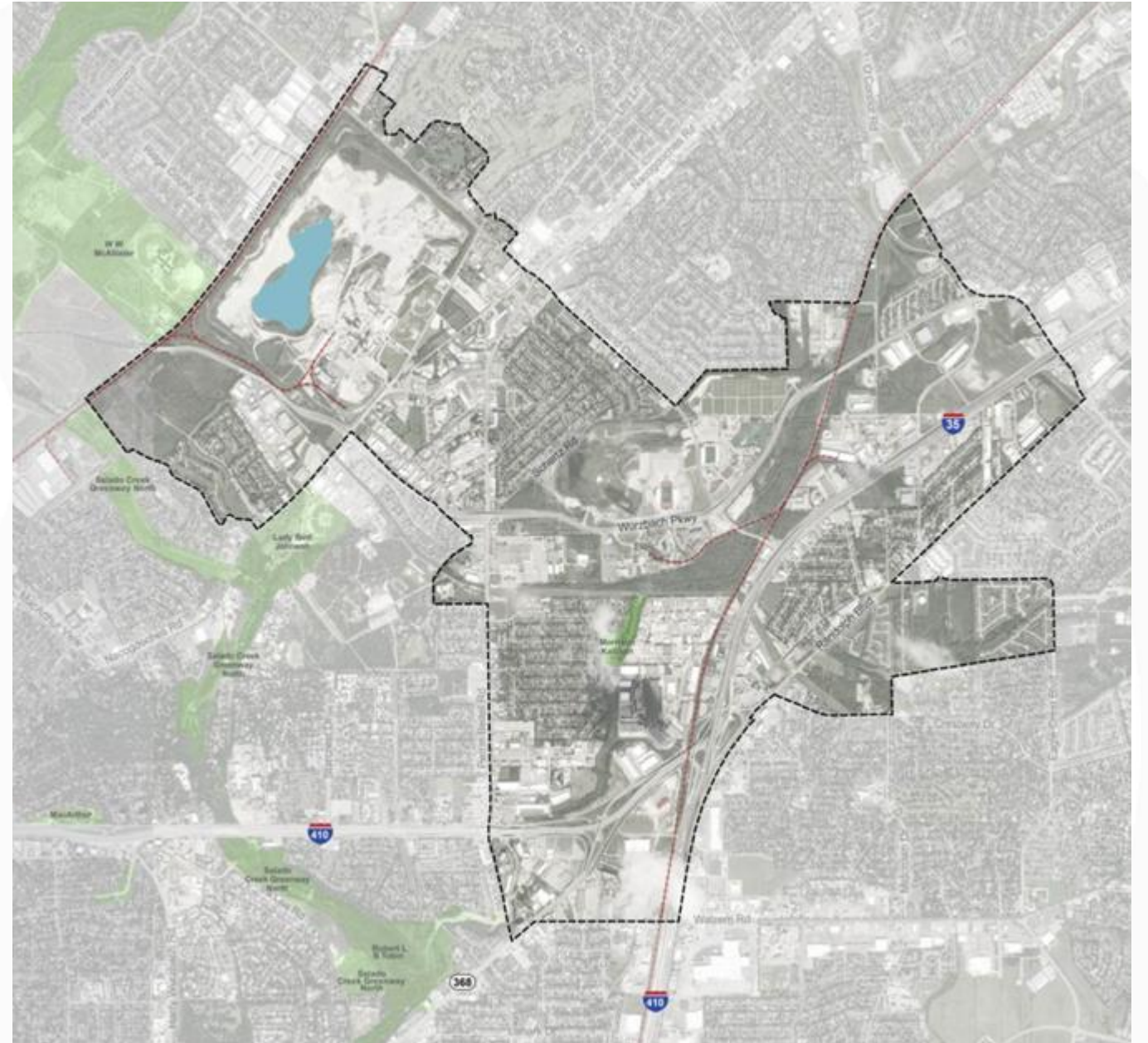
NE Loop 410 and I-35 Regional Center

- 18,600 jobs
- 14,104 residents



NE Loop 410 & I-35 Quick Facts

- 18,600 jobs (2018)
- No single major employer – jobs dispersed
- 98% of people who work in the Regional Center do not live in the area
- 95% of people who live in Regional Center commute in from outside the area



SA



TOMORROW

Regional Center Planning Process and
Topics Covered



Sub-Area Planning Project Phases

1

Analysis & Visioning

Existing conditions; existing plans review; vision and goals; focus areas and corridors; Community Meeting #1

Early 2019

2

Plan Framework

Develop plan elements; focus areas and key corridors; transformative projects; Community Meeting #2

Mid 2019-Early 2020

3

Recommendations & Implementation

Action and phasing strategies; draft Plan elements; Community Meeting #3

Late 2019-Early 2020

4

Documentation & Adoption

Public Hearings, adoption, final summary and ePlan

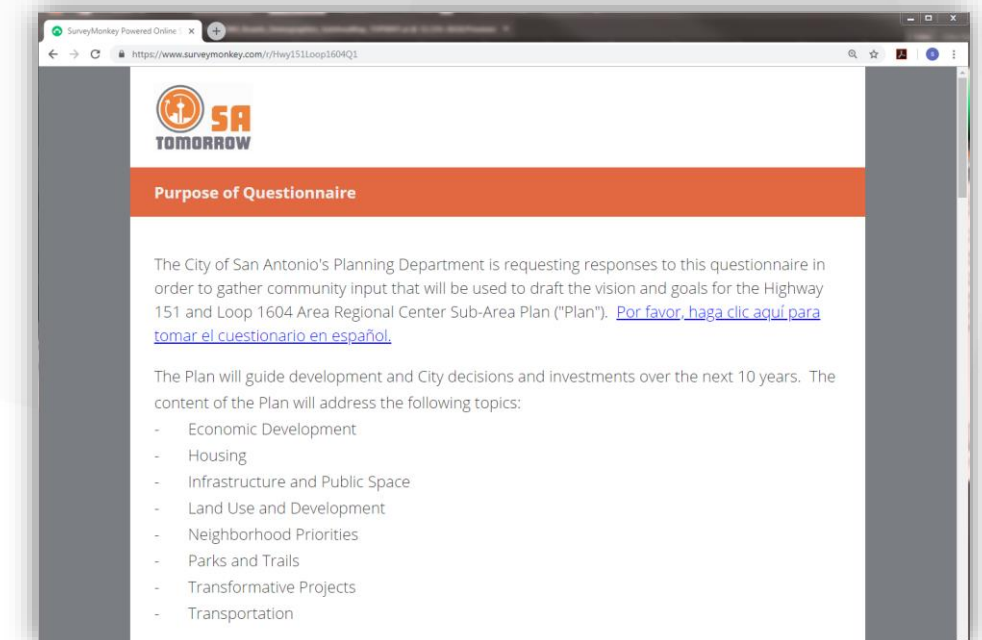
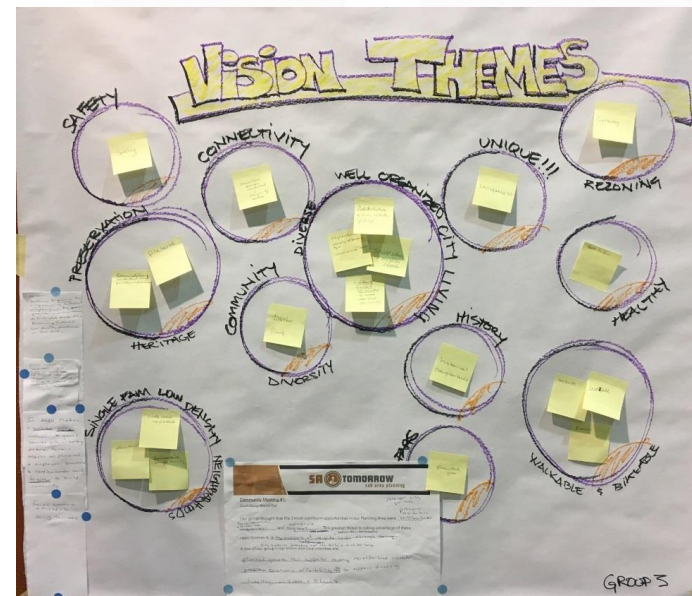
Early-Mid 2020

Analysis: Where are we now?

-Existing Conditions

Visioning: Where do we want to be long term?

-The desired state of your community in the future



“What topics will this plan address?”

- Land Use
- Transportation and Mobility
- Parks, Public Space and Recreation
- Housing
- Economic Development
- Infrastructure and Amenities
- Focus Areas / Corridors
- Transformative Projects
- Neighborhood Priorities
- Framework helps identify and organize key **physical concepts and strategies**
- Is informed by existing conditions analysis and community vision and goals



“How do we get from where we are to where we want to be?”

- Strategies for accomplishing long-term vision
 - Address Near-, Medium-, and Long-Term projects and programs
 - Guide both:
 - City projects (require funding, planning, design and construction)
 - Private investment (require financing, design, approvals and construction)



- Public Hearings & Comments
- Regional Center Plan Adopted by City Council and Planning Commission



SA



TOMORROW

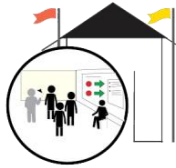
Community Engagement – Let's Talk



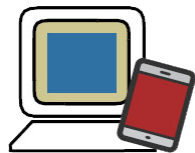
Engagement is a Two-Way Street



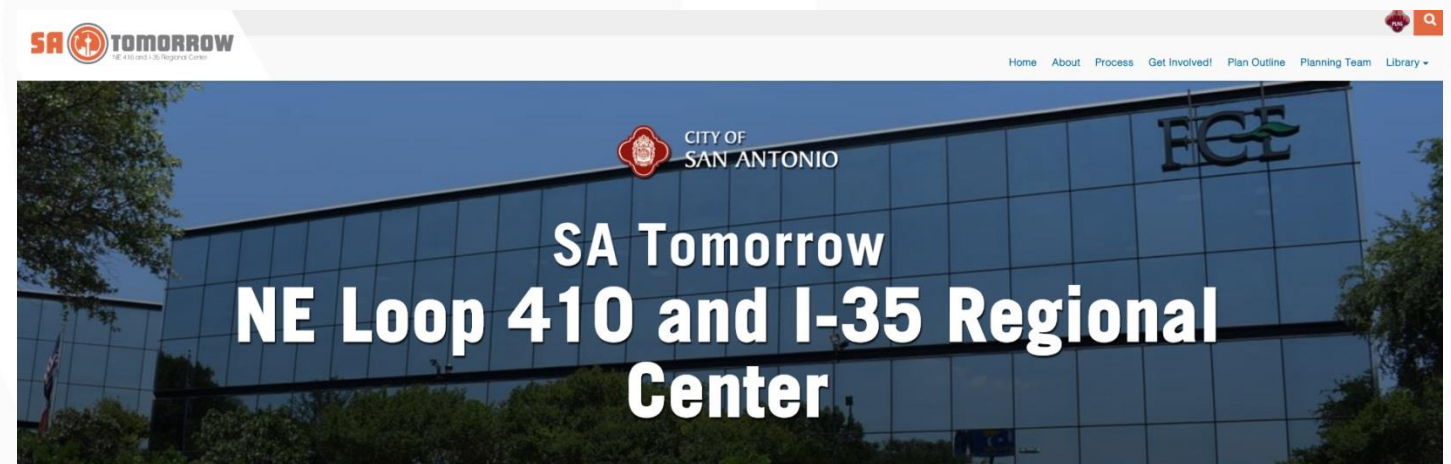
Community & Public Meetings



Invite Us to Your Neighborhood Meetings & Events



Connect Online and Social Media



Happening Now: Community Engagement

Questionnaire Time!

Go to <https://www.surveymonkey.com/r/NE410-I35Q1> to let us know:

- 1) What do you like most about this area?
- 2) What is missing from the area?
- 3) What about the community would you want to see be different so it remains an attractive place for future generations?
- 4) What is your vision of “big idea” or vision for future of this area.



Purpose of Questionnaire

The City of San Antonio's Planning Department is requesting responses to this questionnaire in order to gather community input that will be used to draft the vision and goals for the NE 410 and I-35 Area Regional Center Sub-Area Plan ("Plan"). [Por favor, haga clic aquí para tomar el cuestionario en español.](#)

The Plan will guide development and City decisions and investments over the next 10 years. The content of the Plan will address the following topics:

- Economic Development
- Housing
- Infrastructure and Public Space
- Land Use and Development
- Neighborhood Priorities
- Parks and Trails
- Transformative Projects
- Transportation

The boundaries of the Plan area are shown on the map below. Please reference this map when answering questions.

ANSWER OUR ONLINE QUESTIONNAIRE

Tell us your thoughts for the future.

Go to <https://www.surveymonkey.com/r/NE410-I35Q1>

Or follow this QR code by scanning with your phone's camera: (if equipped)



SA



TOMORROW

Resources



NE Loop 410 and I-35 Regional Center Plan Website

<https://nei35.sacompplan.com/>



- Please sign up for email updates and meeting notifications
- Upcoming meetings and events will be posted on our **Get Involved!** Page – sign up for email updates

Other Resources

- www.satomorrow.com
- www.sacompplan.com
- www.sacorridors.com
- www.sanantonio.gov/planning



Questions & Comments

Heather Yost, City of San Antonio

Heather.Yost@sanantonio.gov



The logo features the letters 'SA' in a bold, orange, sans-serif font. To its right is a circular icon with an orange border containing a white silhouette of the Tower of the Americas and a circular arrow. Further right, the word 'TOMORROW' is written in a large, bold, grey, sans-serif font. Below 'TOMORROW', the words 'sub area planning' are written in a smaller, orange, sans-serif font.

SA  **TOMORROW**
sub area planning

NE Loop 410 and I-35 Regional Center Plan

City of San Antonio
Planning Department
SA Tomorrow Planning Initiatives

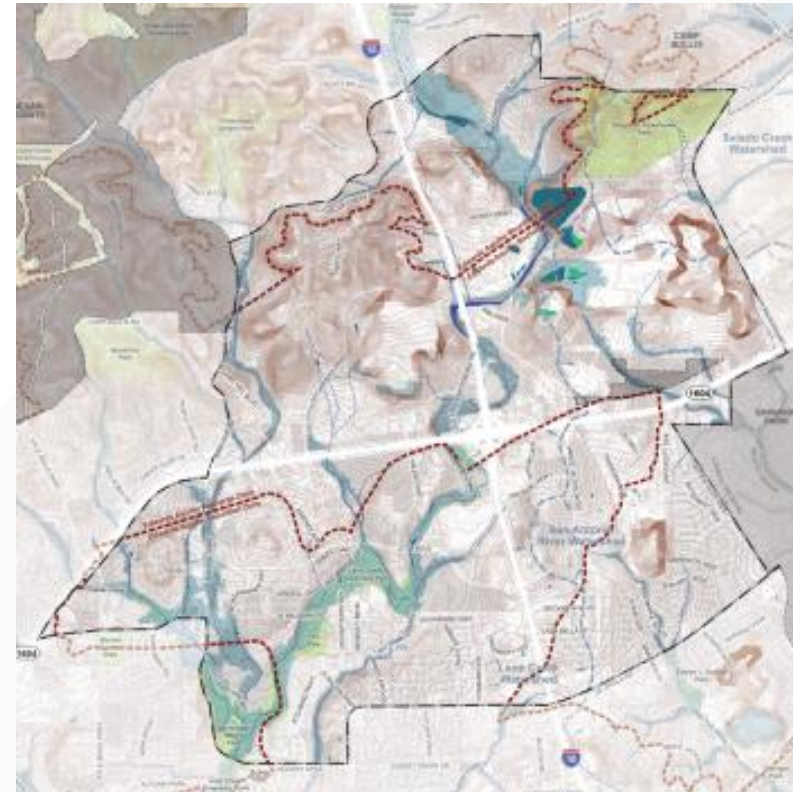
February 21, 2019



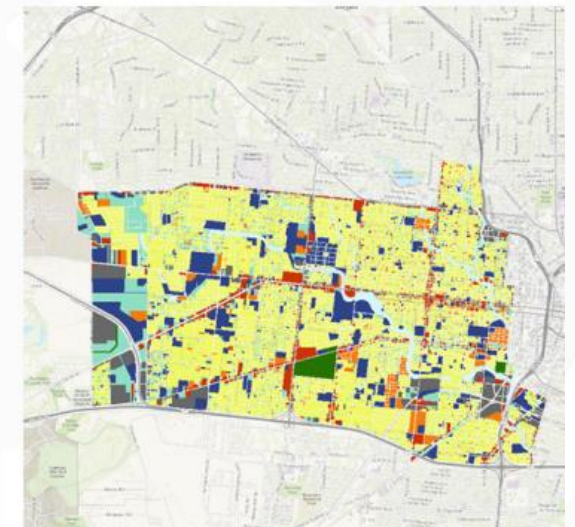
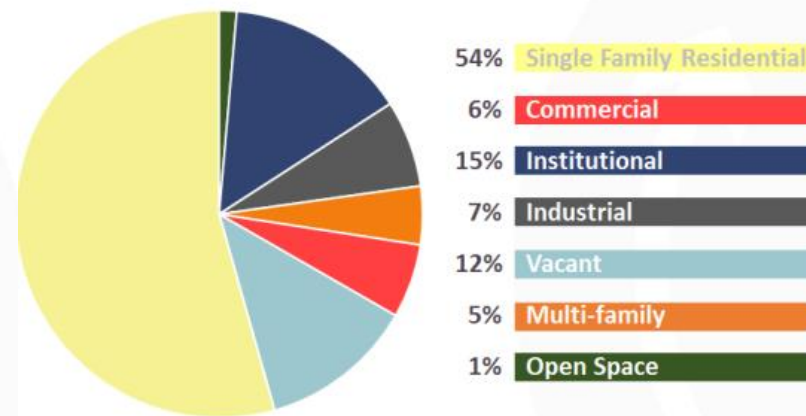
Auxiliary Marketing Services
Bowtie
Cambridge Systematics, Inc.
Economic & Planning Systems, Inc.
Mosaic Planning and Development Services
Ximenes & Associates

Existing Conditions

- Existing Conditions
 - Review of Existing Plans
 - Data Visualization and Analysis
 - Community Observations and Insights



Population and Housing



Vision And Goals

- **Vision:** describes the desired state of your community in the future



EMERGING VISION FOR MIDTOWN

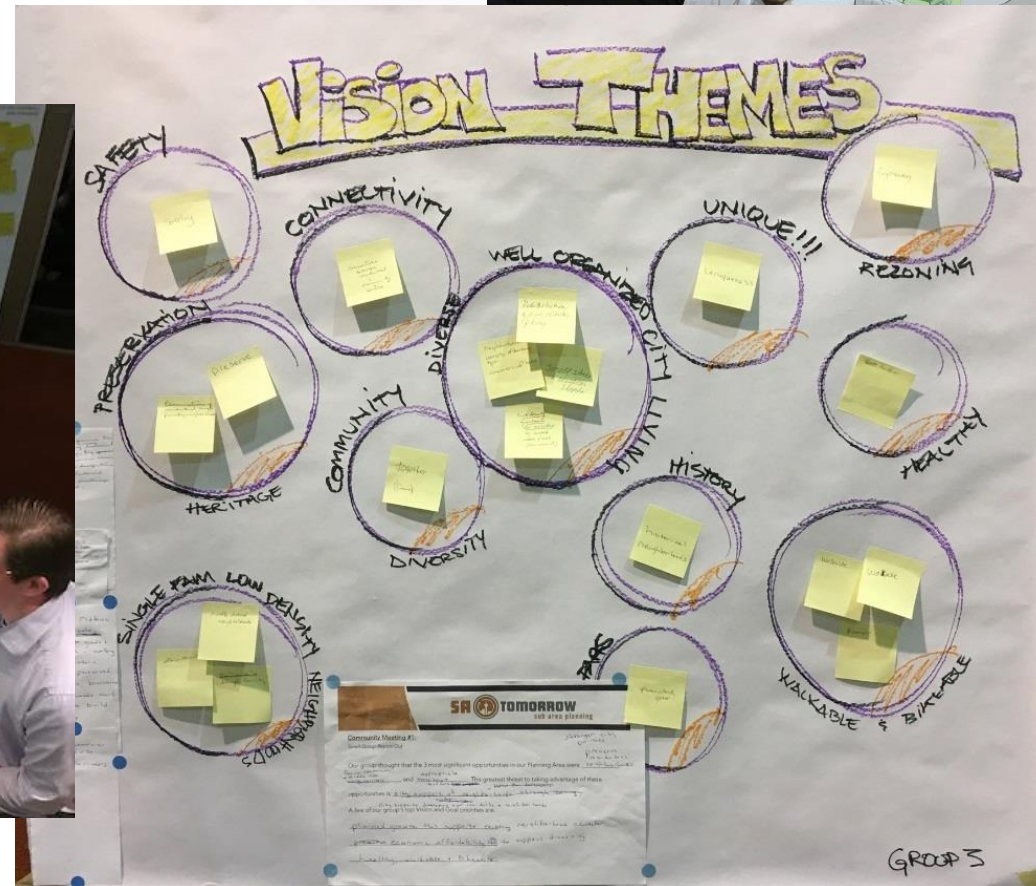
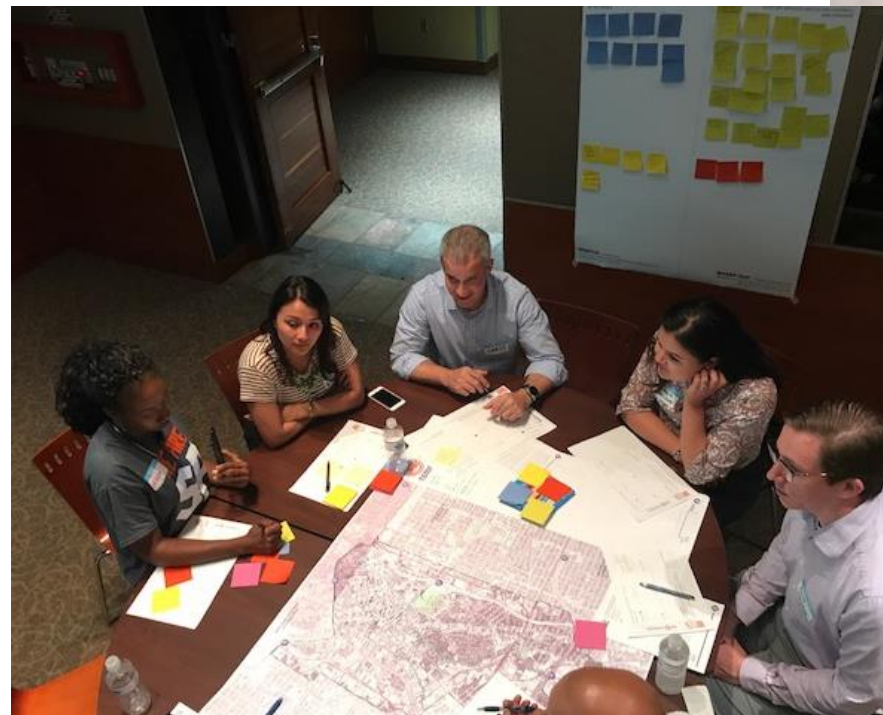
The following vision statement distills community aspirations and common themes into a description of what Midtown could be like in the future.

In 2040, Midtown will reflect the diversity of San Antonio's people and families. Historic neighborhoods, rooted communities, iconic waterways and parks, and places of culture and learning will continue to characterize the area.

Unique destinations will each include an abundance of places to live, work, learn and enjoy, yet each will have a distinct character, featuring—and growing from—local culture and landscape.

Midtown's neighborhoods will continue to convey historic character, and will have affordable homes and apartments for a diverse population. People of all ages and circumstances will be able to choose, stay, and call Midtown home.

Midtown's multiple-purpose streets, trails, and public places will offer comfortable and convenient choices in walking, biking and transit riding, and make it easy to get exercise, socialize, and experience nature in a healthy environment.



1. Preserve and Enhance Downtown's Authenticity

- Grow and evolve in meaningful ways that encourage attachment between people and place
- Respect historic and culturally significant buildings and streets
- Preserve and protect World Heritage designated areas and other historical sites ensuring compatibility

Goal 4: Foster an innovative economic environment

- Leverage world class medical services, education, and research institutions to attract high quality talent and investment



Plan Framework

- Informed by existing conditions analysis and community vision and goals
- Helps identify and organize key **physical concepts and strategies**
- Complemented by other plan strategies:
 - Housing
 - Economic Development
 - Neighborhood Profiles and Priorities

Plan Framework

Land Use












Transportation and Mobility

Parks, Public Space and Recreation

Infrastructure and Amenities

Focus Areas / Corridors

Plan Elements “Framework”

	Focus Areas		Plaza
	Other Mixed Use Corridors		Improved Pedestrian Crossings
	Park, Open Space, and Recreation		Priority Streetscape Improvements
	Trails		Gateway Opportunities
	Priority Transit Routes		Key Anchors
	Priority Bicycle Routes		



Land Use

- The foundation of Sub-Area Plans
- Desired future **development patterns**
- Regulatory guide and decision making tool
- Facilitates **complementary transitions** to reduce conflicts between adjacent uses
- Land Use **map + text** description and policy direction

Plan Framework

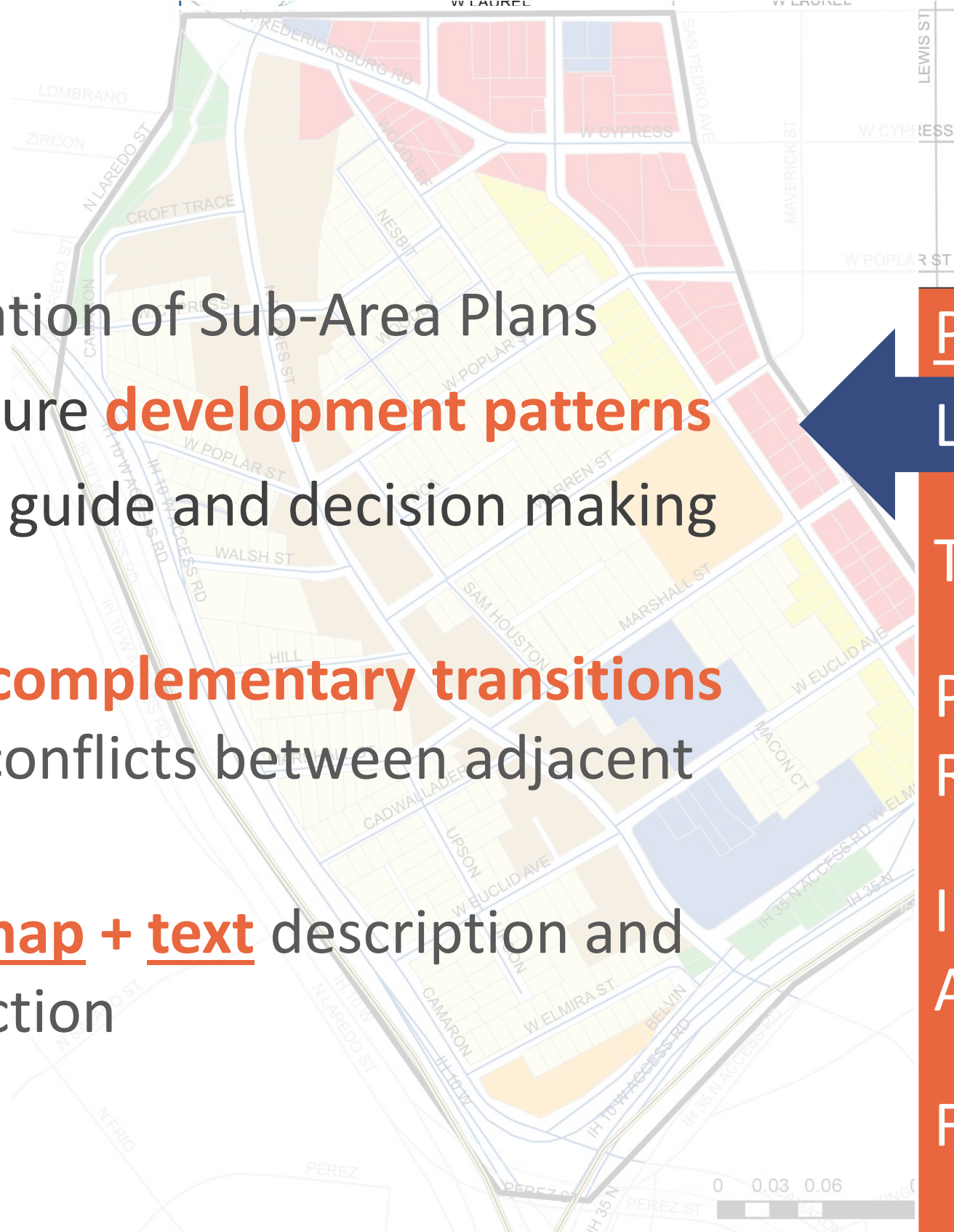
Land Use

Transportation and Mobility

Parks, Public Space and Recreation

Infrastructure and Amenities

Focus Areas / Corridors



Transportation and Mobility

- How do we move around our City?
- Provide **choices and options**
- **Connect places** that are important to us
- Safety and comfort

Plan Framework

Land Use

Transportation and Mobility

Parks, Public Space and
Recreation

Infrastructure and
Amenities

Focus Areas / Corridors



Parks, Public Space, Recreation

- Parks, trails, recreation facilities, and open spaces
- Various sizes, amenities, and character
- Accessible to all San Antonians

Plan Framework

Land Use

Transportation and Mobility

Parks, Public Space and
Recreation

Infrastructure and
Amenities

Focus Areas / Corridors



Infrastructure and Amenities

- Infrastructure to support existing areas and future growth
- Tangible and intangible things that contribute to quality of life

Plan Framework

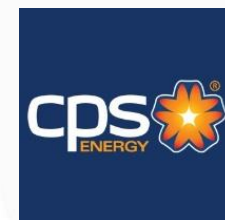
Land Use

Transportation and Mobility

Parks, Public Space and Recreation

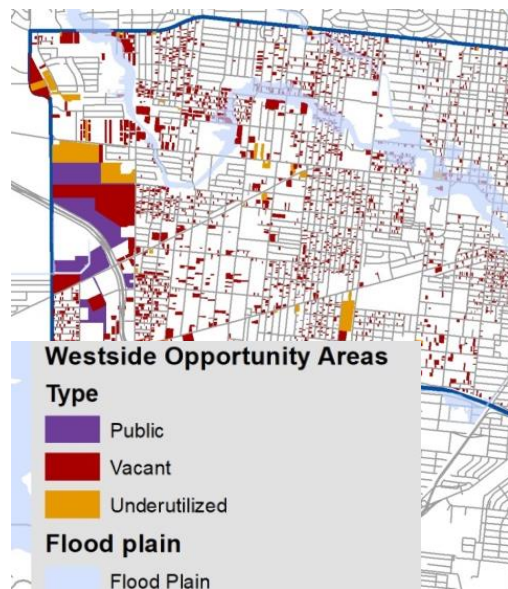
Infrastructure and Amenities

Focus Areas / Corridors



Focus Areas and Corridors

- Opportunity areas ready for revitalization or good locations for new development
- Active corridors that support our communities and make great transit a reality
- Data-driven and community insight



Plan Framework

Land Use

Transportation and Mobility

Parks, Public Space and Recreation

Infrastructure and Amenities

Focus Areas / Corridors

Transformative Projects

- Priority development projects, public improvements, or programs to positively change the area
- Strategic direction to help protect or change the status quo
- Example projects to inspire quality infrastructure and development



Plan Framework

Land Use

Transportation and Mobility

Parks, Public Space and
Recreation

Infrastructure and
Amenities

Focus Areas / Corridors



THE DOOR
CHRISTIAN FELLOWSHIP CHURCH
Where Jesus is Changing Lives!

HOT WELLS
1080

TEMPLE HILL AUTOMOTIVE

PAUL'S TROPHY and AWARDS

Circle K

Wanted to Buy
JUNE 15
1000

35
AHEAD

[Blank white sign]

